



[Go to our business site >](#)

 Search

 Activate

 Log in

[Smart meters](#) [Gas & electricity](#) [Home services](#) [Save energy](#) [Moving home](#) [Help and support](#)

[Home](#) > [Moving home](#)

Moving home

Take the stress out of moving home and take your existing tariff with you. It's quick and simple to tell us you're moving. You can tell us up to 28 days before you move.

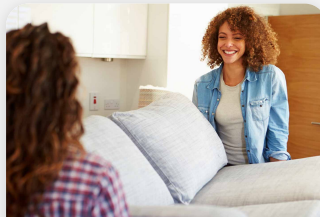
[Tell us you're moving](#)



Already an npower customer?

Tell us if you've moved home, or you're going to be moving soon. You can let us know up to 28 days before you move.

[Move home >](#)



New to npower?

If you're moving into a property we supply, get it switched to your name.

[Move in >](#)



Prepayment meter?

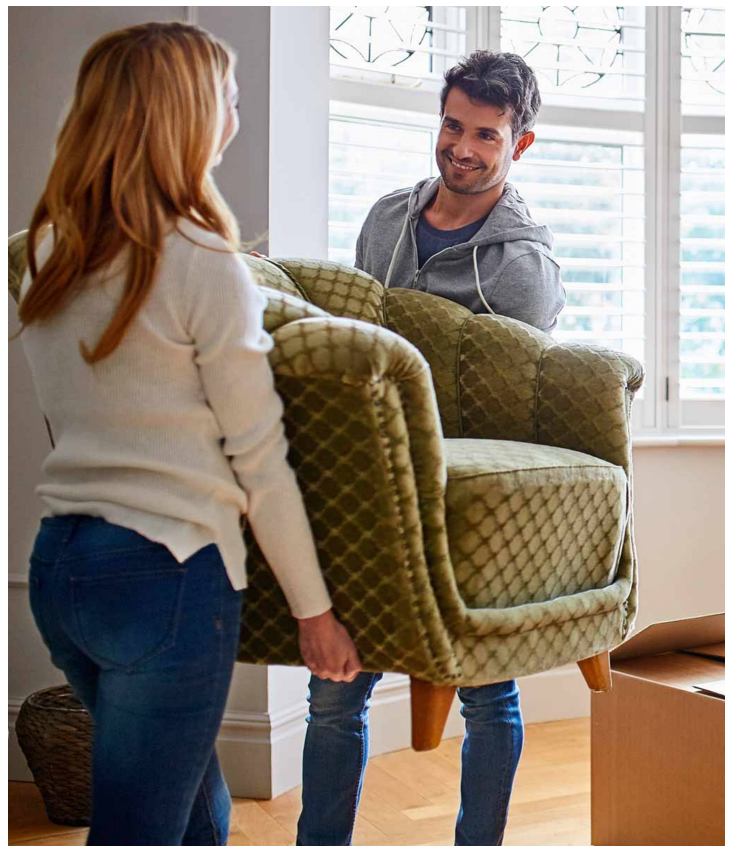
Let us know if you've got a prepayment meter, or if there's one in your new home.

[Contact us >](#)

Not joined us yet?

Choose from our range of fixed and variable tariffs, and get your energy sorted at your new home.

[Get a quote](#) ➔



Moving a tenant?

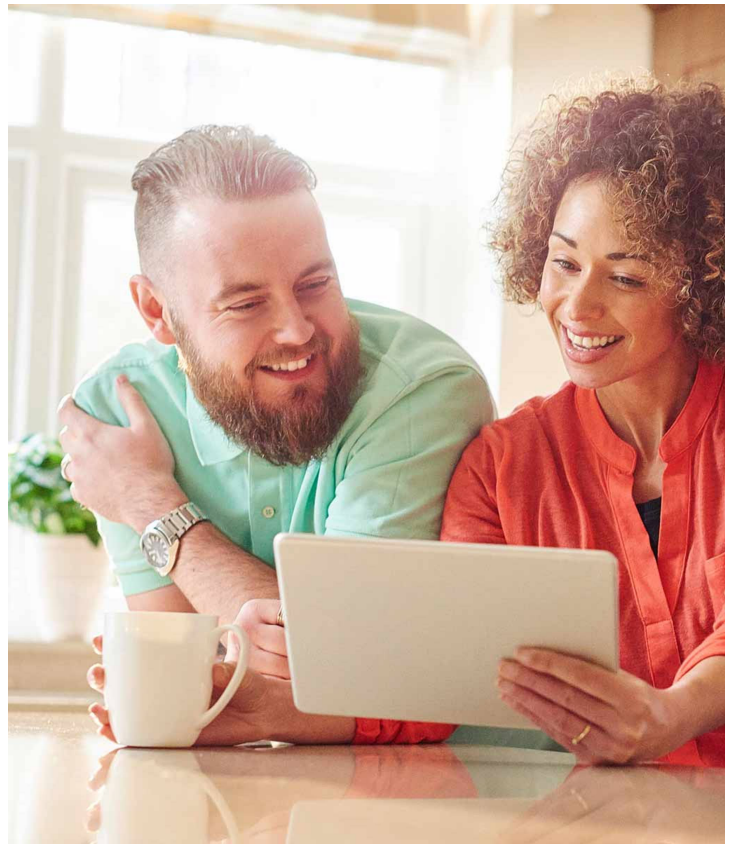
If you're a landlord, letting agent or housing association, it's easy to tell us when there's someone moving in or out of a property.

[Move a tenant in or out](#) ➔

Questions we get asked

- [➤ I'm moving home - what do you need to know, and when?](#)
- [➤ I've just moved home – what do you need from me now?](#)
- [➤ I'm moving home – when will I get my final bill?](#)
- [➤ I have a new tenant moving in to my property – what do I need to know and do?](#)
- [➤ I'm a new customer, when will I get my first bill or statement?](#)

[View all FAQs ➤](#)



Other things you might be interested in



Moving home checklist

Read our handy checklist to tick off who you need to tell about your move.

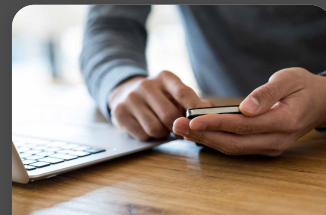
 [Moving home checklist \(PDF, 86KB\)](#)



Student moves

We know energy's not top of your priority list – so we've made it quick and easy to sort out online. It only takes a few minutes, then you can get back to the important stuff.

[Tell us about a student move ➤](#)



Notify us of a bereavement

Our specialist Bereavement Team is trained to help you as much as we can and will support you through this difficult time.

[Notify us ➤](#)

**All about
npower**

[About us](#)

[Contact us](#)

[Standards of conduct](#)

[Modern Slavery Act
2019](#)

[Complaints
performance](#)

[Complaints](#)

[Privacy policy](#)

[Cookies](#)

[Terms and conditions](#)

[Accessibility](#)

Our business

[Sitemap](#)

[npower for your home](#)

[npower Business](#)

[npower Business
Solutions](#)

[Media centre](#)

[Work with us](#)

[Innogy](#)

[More about E.ON](#)



Facebook



Twitter



YouTube



**Our
blog**

© npower 2020